

Bronze Butterfly Valve

Features

- All Sizes have been UL and FM certified and rated to 20.7 bar (300 psi)
- All valves are mounted an integral pre-wired supervisory tamper switch assembly. The tamper switch signal movement of the valve disc from the full open position, when mounted on any slow close valve and wired
- Switch rating:
10.1 Amps-125/250VAC-60Hz,
Actual switch application rating:
10 Amps/115 VAC-60Hz
0.5 Amps/28 VDC
- All Valves are furnished with tamper switch assemblies for indoor and outdoor use
- A 1/4 turn valve with slow closing and opening to prevent water hammer and shock in the fire protection service



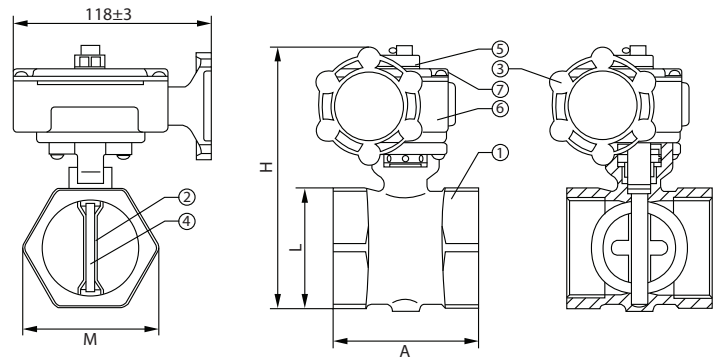
Working Pressure

Max. working pressure 20.7 bar (300 psi)

Material Specification

Part No.	Description	Material
1	Body	Bronze ASTM 584 C83600 Brass ASTM 584 C87850
2	Disc	SS304 Sheet Stamping
3	Handwheel	ASTM A216 WCB
4	Seat	ASTM D2000 VITON / EPDM
5	Indicator	Powder Metal FD0205 95HT
6	Housing	Forged Brass Jis C3771 Ref. ASTM C37700
7	Cover	Forged Brass Jis C3771 Ref. ASTM C37700

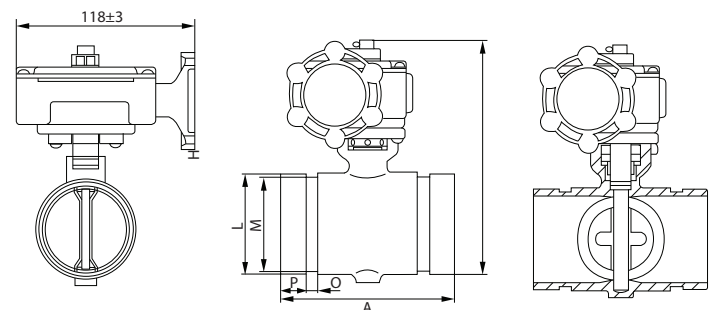
Threaded ends



Dimensions (threaded ends)

Size		A	H	L	M
mm	inch				
DN32	1 1/4"	66.7	130.2	49.2	55
DN40	1 1/2"	73	142.1	55.6	60.3
DN50	2"	82.6	155.6	70	79

Grooved ends



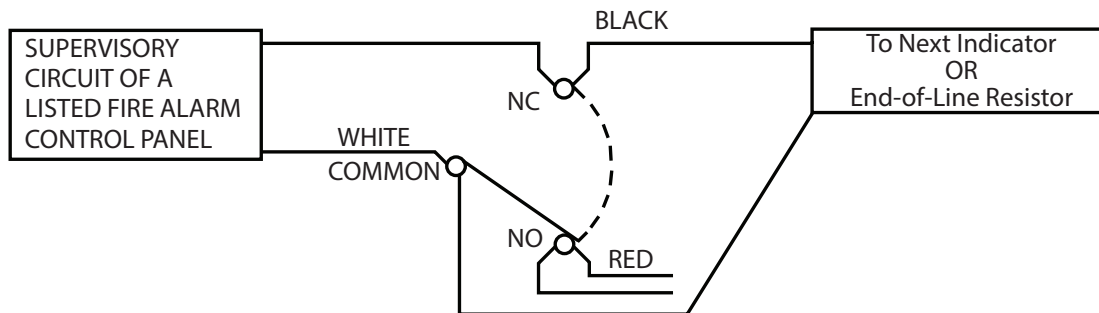
Dimensions (grooved ends)

Size		A	H	P	O	M	L
mm	inch						
DN32	1 1/4"	98	132.2	15.9	8	39	42.4
DN40	1 1/2"	102	138.9	15.9	8	45.1	48.3
DN50	2"	104	154.2	15.9	8	57.1	60.3

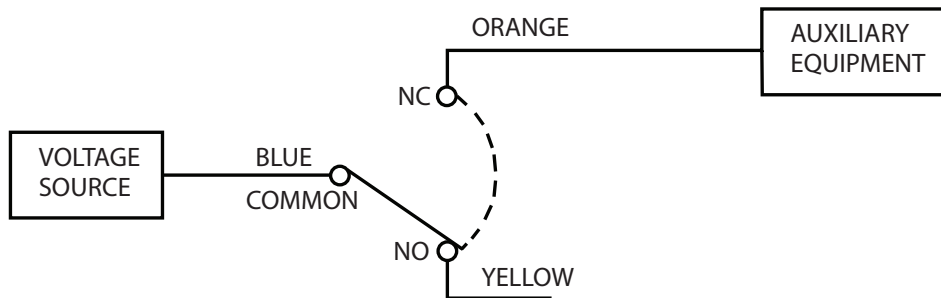
Bronze Butterfly Valve

Wiring Diagram

SWITCH 1 : DUAL LEADS SOLDERED TO SWITCH TABS



SWITCH 2 : SINGLE LEADS SOLDERED TO SWITCH TABS



Green wire is provided as ground for the switch housing.
Switch rating: 10.1Amps-125/250VAC-60Hz
Actual switch application rating: 10Amps/115VAC-60Hz, 0.5Amps/28VDC

Important Installation Information

- Rapidrop *Model BT/BG 175 Butterfly Valve* must only be installed by a competent person in accordance with requirements of the local authority having jurisdiction. Deviations from these standards will invalidate warranty.
- It is the responsibility of the installing contractor to include a copy of this document in the sprinkler system installation, operating and maintenance manual.
- Alterations to Rapidrop products will void any warranty.
- *Model BT/BG 175 Butterfly Valve* should be inspected and maintained during routine sprinkler system inspections by a competent person in accordance with national codes/requirements.
- Failure to follow these instructions could cause improper operation, resulting in personal injury and/or property damage.
- For further details and technical support please contact your Rapidrop sales representative.