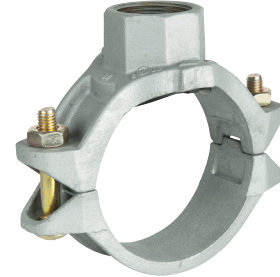


Mechanical Tee Threaded Outlet Model 3J



Material Specification

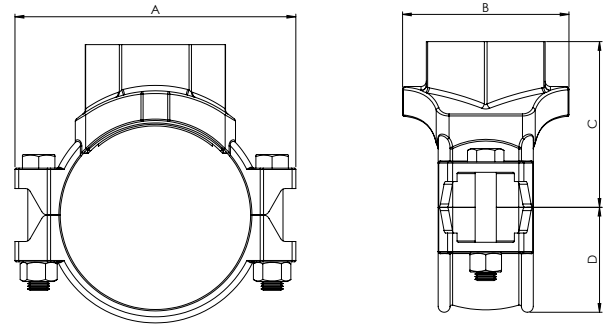
- Body - Ductile Iron, ASTM A536
- Bolts and nuts - Mild steel Zinc Plated, ASTM A183, ISO898

Gasket Specification

- EPDM, ASTM D2000

Temperature range -34°C to +110°C (-30°C to +230°F).

Recommended for hot water service within specified temperature range plus a variety of diluted acids, oil free air and many chemical services. Not recommended for petroleum service.



Finish

- Red painted (RAL 3000)
- Galvanised

Model Number (Red Painted)	Model Number (Galvanised)	Nominal Size mm/in	Pipe O.D mm/in	Max. Working Pressure bar/psi				Hole Dia mm/in	Dimensions				Bolt Size No.-Size mm
				UL	FM	VdS	CNBOP		A mm/in	B mm/in	C mm/in	D mm/in	
RD3J060025	RD3J060025G	50 × 25 2 × 1	60.3 × 33.7 2.375 × 1.315	20.7 300	20.7 300	16 232	20 290	38 1.50	116 4.57	68 2.68	60 2.36	39 1.54	3/8 × 55 M10X57
RD3J060032	RD3J060032G	50 × 32 2 × 1¼	60.3 × 42.4 2.375 × 1.660	20.7 300	20.7 300	16 232	20 290	45 1.75	116 4.57	76 2.99	65 2.56	39 1.54	3/8 × 55 M10X57
RD3J060040	RD3J060040G	50 × 40 2 × 1½	60.3 × 48.3 2.375 × 1.900	20.7 300	20.7 300	16 232	-	45 1.75	116 4.57	76 2.99	65 2.56	39 1.54	3/8 × 55 M10X57
RD3J076032	RD3J076032G	65 × 32 76.1 × 1¼	76.1 × 42.4 3.000 × 1.660	20.7 300	20.7 300	16 232	20 290	51 2.00	137 5.39	84.5 3.33	75 3.05	49.5 1.95	1/2 × 70 M12X70
RD3J076040	RD3J076040G	65 × 40 76.1 × 1½	76.1 × 48.3 3.000 × 1.900	20.7 300	20.7 300	16 232	20 290	51 2.00	137 5.39	84.5 3.33	61.5 2.42	49.5 1.95	1/2 × 70 M12X70
RD3J089025	RD3J089025G	80 × 25 3 × 1	88.9 × 33.7 3.500 × 1.315	20.7 300	20.7 300	16 232	20 290	38 1.50	152 5.98	72.5 2.85	80 3.15	56.5 2.22	1/2 × 75 M12X76
RD3J089032	RD3J089032G	80 × 32 3 × 1¼	88.9 × 42.4 3.500 × 1.660	20.7 300	20.7 300	16 232	-	51 2.00	152 5.98	85.5 3.37	80 3.15	56.5 2.22	1/2 × 75 M12X76
RD3J089040	RD3J089040G	80 × 40 3 × 1½	88.9 × 48.3 3.500 × 1.900	20.7 300	20.7 300	16 232	20 290	51 2.00	152 5.98	85.5 3.37	80 3.15	56.5 2.22	1/2 × 75 M12X76
RD3J089050	RD3J089050G	80 × 50 3 × 2	88.9 × 60.3 3.500 × 2.375	20.7 300	20.7 300	16 232	20 290	64 2.50	152 5.98	98 3.86	80 3.15	56.5 2.22	1/2 × 75 M12X76
RD3J114025	RD3J114025G	100 × 25 4 × 1	114.3 × 33.7 4.500 × 1.315	20.7 300	20.7 300	16 232	20 290	38 1.50	188 7.40	78.5 3.09	93 3.66	70 2.76	1/2 × 75 M12X76
RD3J114032	RD3J114032G	100 × 32 4 × 1¼	114.3 × 42.4 4.500 × 1.660	20.7 300	20.7 300	16 232	20 290	51 2.00	188 7.40	89 3.50	95 3.74	70 2.76	1/2 × 75 M12X76



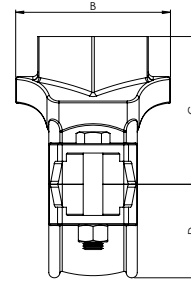
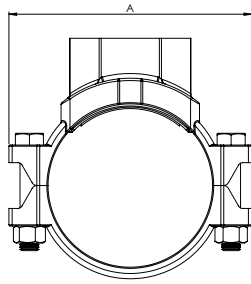
Data Sheet 8.61

Issue D



Mechanical Tee Threaded Outlet

Model 3J

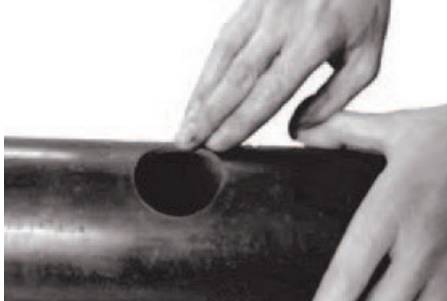


Model Number (Red Painted)	Model Number (Galvanised)	Nominal Size mm/in	Pipe O.D mm/in	Working Pressure bar/psi				Hole Dia mm/in	Dimensions				Bolt Size No.-Size mm
				UL	FM	VdS	CNBOP		A mm/in	B mm/in	C mm/in	D mm/in	
RD3J114040	RD3J114040G	100 × 40 4 × 1½	114.3 × 48.3 4.500 × 1.900	20.7 300	20.7 300	16 232	-	51 2.00	188 7.40	89 3.50	97 3.82	70 2.76	1/2 × 75 M10X76
RD3J114050	RD3J114050G	100 × 50 4 × 2	114.3 × 60.3 4.500 × 2.375	20.7 300	20.7 300	16 232	-	64 2.50	188 7.40	104.5 4.11	100 3.94	70 2.76	1/2 × 75 M10X76
RD3J114065	RD3J114065G	100 × 65 4 × 2½	114.3 × 76.1 4.500 × 3.000	20.7 300	20.7 300	16 232	20 290	70 2.75	188 7.40	104.5 4.11	102 4.02	70 2.76	1/2 × 75 M10X76
RD3J114080	RD3J114080G	100 × 80 4 × 3	114.3 × 88.9 4.500 × 3.500	20.7 300	20.7 300	16 232	20 290	89 3.50	188 7.40	128 5.039	102 4.02	70 2.76	1/2 × 75 M10X76
RD3J139042	RD3J139042G	125 × 32 139.7 × 1¼	139.7 × 42.4 5.500 × 1.660	20.7 300	20.7 300	16 232	20 290	51 2.00	221.5 8.72	95 3.74	112 4.41	84 3.31	5/8 × 105 M16X105
RD3J168032	RD3J168032G	150 × 32 6 × 1¼	168.3 × 42.4 6.500 × 1.660	20.7 300	20.7 300	16 232	20 290	51 2.00	247 9.72	95 3.74	122 4.80	98.5 3.88	5/8 × 105 M16X105
RD3J168040	RD3J168040G	150 × 40 6 × 1½	168.3 × 48.3 6.500 × 1.900	20.7 300	20.7 300	16 232	20 290	51 2.00	247 9.72	95 3.74	122 4.80	98.5 3.88	5/8 × 105 M16X105
RD3J168050	RD3J168050G	150 × 50 6 × 2	168.3 × 60.3 6.625 × 2.375	20.7 300	20.7 300	16 232	-	64 2.50	247 9.72	112.5 4.43	132 5.20	98.5 3.88	5/8 × 105 M16X105
RD3J168065	RD3J168065G	150 × 65 6 × 2½	168.3 × 76.7 6.625 × 3.000	20.7 300	20.7 300	16 232	20 290	70 2.75	247 9.72	112.5 4.43	132 5.20	98.5 3.88	5/8 × 105 M16X105
RD3J168080G	RD3J168080G	150 × 80 6 × 3	168.3 × 88.9 6.625 × 3.500	20.7 300	20.7 300	16 232	20 290	89 3.50	247 9.72	132 5.20	140 5.51	98.5 3.88	5/8 × 105 M16X105
RD3J219050	RD3J219050G	200 × 50 8 × 2	219.1 × 60.3 8.625 × 2.375	20.7 300	20.7 300	16 232	20 290	64 2.50	320 12.60	117 4.61	160 6.30	125 4.92	3/4 × 115 M20X115
RD3J219065	RD3J219065G	200 × 65 8 × 2½	219.1 × 76.1 8.625 × 3.000	20.7 300	20.7 300	16 232	20 290	70 2.75	320 12.60	118 4.65	160 6.30	125 4.92	3/4 × 115 M20X115
RD3J219080	RD3J219080G	200 × 80 8 × 3	219.1 × 88.9 8.625 × 3.500	20.7 300	20.7 300	16 232	20 290	89 3.50	320 12.60	136.5 5.37	160 6.30	125 4.92	3/4 × 115 M20X115

DS: 8.61
Issue D
11/11/2021
© 2021 Rapidrop

Rapidrop Global Ltd
T: +44 (0) 1733 847 510 F: +44 (0) 1733 553 958
e: rapidrop@rapidrop.com
w: www.rapidrop.com

Mechanical Tee Threaded Outlet Model 3J



1. Pipe Preparation

Clean the gasket sealing surface within 16mm of the hole and visually inspect the sealing surface for defects that may prevent proper sealing of the gasket. Don't drill the hole on weld line.



2. Remove Burrs

If any burrs or slug exists at the pipe hole, please remove them before assembly, to protect the gasket and avoid leakage.



3. Gasket installation

Insert the gasket into outlet housing making sure the tab in the gasket line up with the tab recesses in the housing. Align outlet housing over the pipe hole making sure that the locating collar is in the pipe hole.



4. Alignment

Align the strap around the pipe, insert the bolts and tighten the nuts finger tight.



5. Tighten Nuts

Alternatively and evenly tighten the nuts to the specified bolt torque.



6. Assembly completed

There should be even gaps on two sides between upper and lower housings.

Caution

Proper torquing of bolts is required to obtain specified performance.

- Over torquing the bolts may result in damage to the bolt and / or casting which could result in pipe joint separation.
- Under torquing the bolts may result in lower pressure retention capabilities, lower bend load capabilities, joint leakage and pipe joint separation. Pipe joint separation may result in significant property damage and serious injury.

Specified Bolt Torque ANSI BOLTS

Bolt Size Inch	Specified Bolt Torque	
	Lbs-Ft.	N.m
3/8	30-45	40-60
1/2	80-100	110-135
5/8	100-130	135-175
3/4	-	-
7/8	-	-