



Pressure Switch

Model: PS10-1 & PS10-2

General Description

The PS10 Series Pressure Actuated Switches are designed for the detection of a waterflow condition in automatic fire sprinkler systems of particular designs such as wet pipe systems with alarm check valves, dry pipe, preaction, or deluge valves. The PS10 is also suitable to provide a low pressure supervisory signal; adjustable between 0.27 and 1.03 bar (4 and 15 psi).

Installation

1. Apply Teflon tape to the threaded male connection on the device. (Do not use pipe dope)
2. Device should be mounted in the upright position (threaded connection down).
3. Tighten the device using a wrench on the flats on the device.

Wiring Instructions

1. Remove the tamper resistant screw with the special key provided.
2. Carefully place a screwdriver on the edge of the knockout and sharply apply a force sufficient to dislodge the knockout plug. See Fig 9.
3. Run wires through an approved conduit connector and affix the connector to the device.
4. Connect the wires to the appropriate terminal connections for the service intended. See Figures 2, 4, 5 and 6. See Fig 7 for two switches, one conduit wiring.

Testing

The operation of the pressure alarm switch should be tested upon completion of installation and periodically thereafter in accordance with the applicable NFPA codes and standards and/or the authority having jurisdiction (manufacturer recommends quarterly or more frequently).

Wet System

Method 1: When using PS10 and control unit with retard - connect PS10 into alarm port piping on the input side of retard chamber and electrically connect PS10 to control unit that provides a retard to compensate for surges.

Method 2: When using the PS10 for local bell application or with a control that does not provide a retard feature - the PS10 must be installed on the alarm outlet side of the retard chamber of the sprinkler system.

Testing: Accomplished by opening the inspector's end-of-line test valve. Allow time to compensate for system or control retard. NOTE: Method 2 is not applicable for remote station service use, if there is an unsupervised shut-off valve between the alarm check valve and the PS10.



Technical Details

Working Pressure	UL & FM - 20.7 bar (300 psi) LPCB - 17.2 bar (250 psi) VdS - 16 bar (230 psi)
Adjustment Range	0.27 - 1.03 bar (4 - 15 psi)
Factory Adjustment	0.27 - 0.55 bar (4 - 8 psi)
Differential	0.13 bar (2 psi)
Dimensions	9,6cm x 8,1cm x 10,7cm (W x D x H) 3,78" x 3,20" x 4,22" (W x D x H)
Connection	Nylon 1/2" NPT Male
Contact Ratings	SPDT (Form C) 10.1 Amps at 125/250VAC, 2.0 Amps at 30VDC One SPDT in PS10-1, Two SPDT in PS10-2
Conduit Entrances	Two knockouts provided for 1/2" conduit.
Enclosure	Cover - Die-cast with textured red powder coat finish, single cover screw and rain lip. Base - Die-cast
Environmental Specification	• NEMA 4/IP66 Rated Enclosure - indoor or outdoor when used with NEMA 4 conduit fittings. • Temperature range: -40°C to 60°C (-40° - 140°F)
Service Use	Automatic Sprinkler - NFPA-13 One or two family dwelling - NFPA-13D Residential occupancy up to four stories - NFPA-13R National Fire Alarm Code - NFPA-72

Manufactured by Potter who hold FM Approval, UL Listing, LPCB, VdS and CE Certificates

DS: 2.32
Issue A
05/05/2021
© 2021 Rapidrop

Rapidrop Global Ltd
T: +44 (0) 1733 847 510 F: +44 (0) 1733 553 958
e: rapidrop@rapidrop.com
w: www.rapidrop.com

Pressure Switch

Model: PS10-1 & PS10-2

Wet System With Excess Pressure

Connect PS10 into alarm port piping extending from alarm check valve. Retard provisions are not required. Insure that no unsupervised shut-off valves are present between the alarm check valve and the PS10.

Testing: Accomplished by opening the water by-pass test valve or the inspector's end-of-line test valve. When using end-of-line test, allow time for excess pressure to bleed off.

Dry System

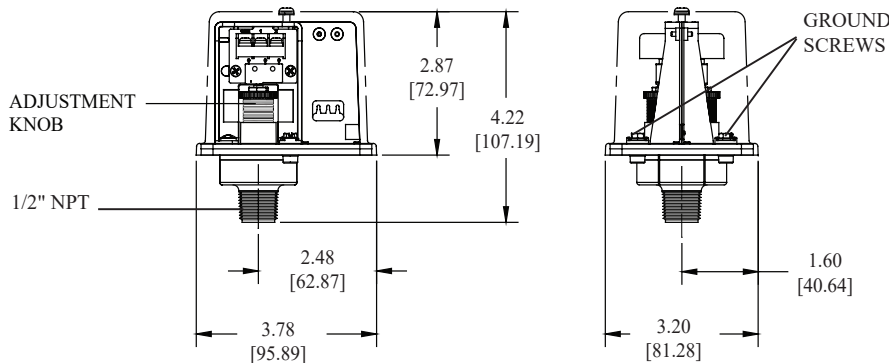
Connect PS10 into alarm port piping that extends from the intermediate chamber of the alarm check valve. Install on the outlet side of the in-line check valve of the alarm port piping. Insure that no unsupervised shut-off valves are present between the alarm check valve and the PS10.

Testing: Accomplished by opening the water by-pass test valve.

Note: The above tests may also activate any other circuit closer or water motor gongs that are present on the system.

Dimensions

Fig. 1



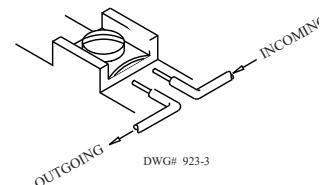
NOTE: To prevent leakage, apply Teflon tape sealant to male threads only.

WARNING

Use of pipe joint cement may result in obstruction of the aperture and loss of signal.

Switch Clamping Plate Terminal

Fig. 2



WARNING

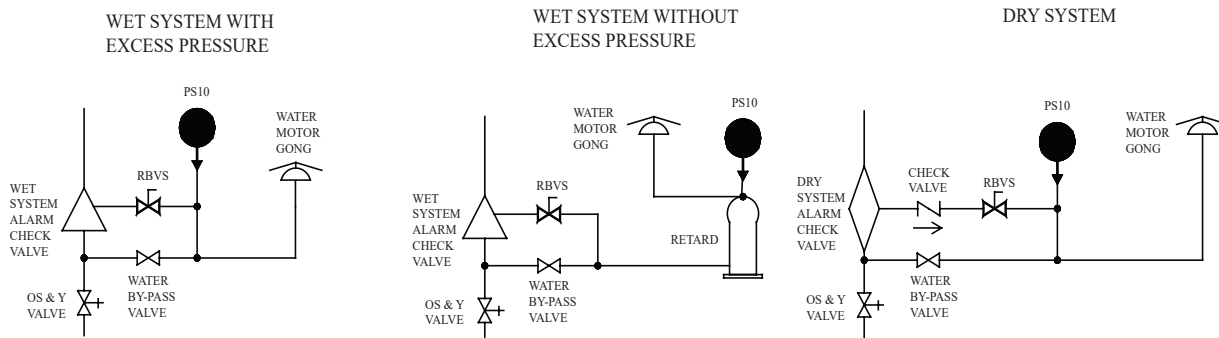
An uninsulated section of a single conductor should not be looped around the terminal and serve as two separate connections. The wire must be severed, thereby providing supervision of the connection in the event that the wire becomes dislodged from under the terminal.

Typical Sprinkler Applications

Fig. 3

CAUTION

Closing of any shutoff valves between the alarm check valve and the PS10 will render the PS10 inoperative. To comply with NFPA-72 any such valve shall be electrically supervised with a supervisory switch such as Potter Model RBVS.



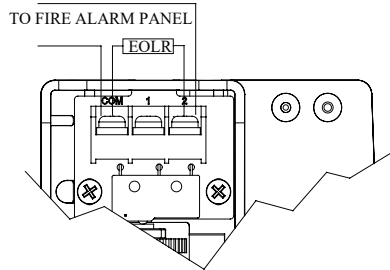
Manufactured by Potter who hold FM Approval, UL Listing, LPCB, VdS and CE Certificates

Pressure Switch

Model: PS10-1 & PS10-2

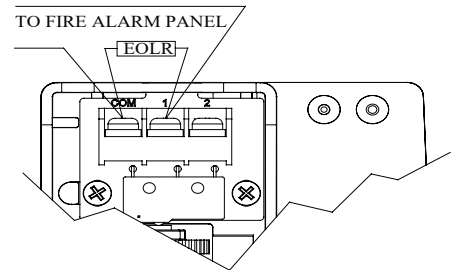
Low Pressure Signal Connection

Fig. 4



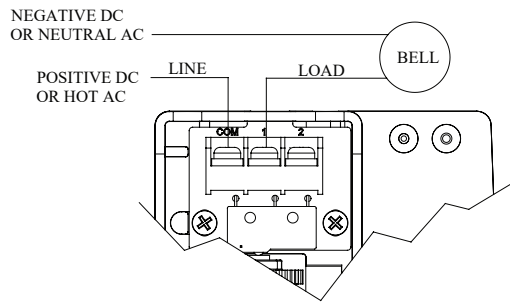
Waterflow Signal Connection

Fig. 5



Local Bell For Waterflow Connection

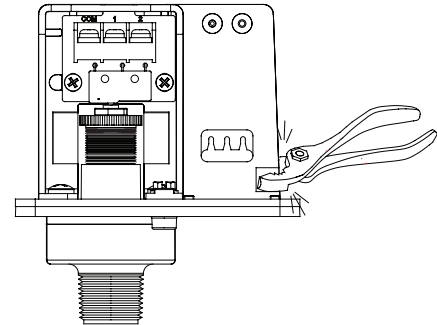
Fig. 6



One Conduit Wiring

Break out thin section of divider to provide path for wires when wiring both switches from one conduit entrance.

Fig. 7



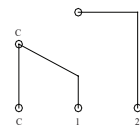
Switch Operation

Fig. 8

Terminal
C: Common

- 1: Closed when installed under normal system pressure.
- 2: Open when installed under normal system pressure. Closes on pressure drop. Use for low pressure supervision.

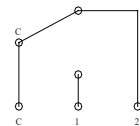
W/ PRESSURE APPLIED



Terminal

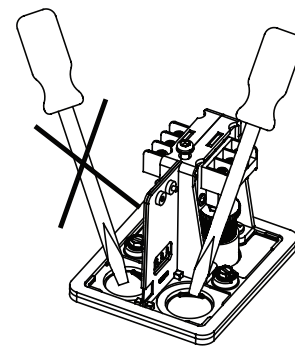
- 1: Open with no pressure supplied. Closes upon detection of pressure. Use for waterflow indication.
- 2: Closed with no pressure applied.

W/O PRESSURE APPLIED



Removing Knockouts

Fig. 9



Warning

- Installation must be performed by qualified personnel and in accordance with all national and local codes and ordinances.
- Shock hazard. Disconnect power source before servicing. Serious injury or death could result.
- Read all instructions carefully and understand them before starting installation. Save instructions for future use. Failure to read and understand instructions could result in improper operation of device resulting in serious injury or death.
- Risk of explosion. Not for use in hazardous locations. Serious injury or death could result.

Caution

- Do not tighten by grasping the switch enclosure. Use wrenching flats on the bushing only. Failure to install properly could damage the switch and cause improper operation resulting in damage to equipment and property.
- To seal threads, apply Teflon tape to male threads only. Using joint compounds or cement can obstruct the pressure port inlet and result in improper device operation and damage to equipment.
- Do not over tighten the device, standard piping practices apply.

Manufactured by Potter who hold FM Approval, UL Listing, LPCB, VdS and CE Certificates